

# Press Release

FOR IMMEDIATE RELEASE  
September 15, 2009  
Contact:  
Daniel J. Douglas  
609-347-0500  
[www.njcrda.com](http://www.njcrda.com)  
ddouglas@njcrda.com

## CRDA EXPANDS SCOPE OF GARAGE TO INCLUDE SOLAR ENERGY

*Project Will Create 250 Jobs*

ATLANTIC CITY – The Casino Reinvestment Development Authority (CRDA) today rejected all bids for the construction of the Christopher Columbus Parking Garage. The garage will be located at the foot of the Atlantic City Expressway on the corner of Fairmount Avenue and Mississippi Avenue near the Atlantic City Outlets at the “The Walk.”

CRDA will be issuing a new Request for Bids (RFB) that will include additional scope items such as a possible solar array system for the roof of the parking garage. The new Request for Bid will be issued within 60 days.

“This CRDA funded construction project will put over 250 people to work, helping build Atlantic City into a destination resort,” stated James B. Kehoe, Chairman of the Casino Reinvestment Development Authority. CRDA is the sole funder of the project.

“CRDA has helped Atlantic City turn the corner by consistently pumping money into the local economy and creating an investor friendly environment. CRDA’s leading role in the South Inlet Transportation Project made the Revel project viable in some of the most difficult economic times,” said Kehoe, referring to the recent news that the Revel project is in the process of securing financing to finish the over \$2 billion project.

The garage is located within easy walking distance of “The Walk” - a dynamic urban retail and entertainment project, featuring nationally recognized factory outlet retailers, interactive entertainment and restaurants. “The Walk” creates a major retail/entertainment district that strongly links Atlantic City Convention Center, Boardwalk Hall with the Boardwalk-casino-hotel district. Plans for expansion of “The Walk” are now under review.

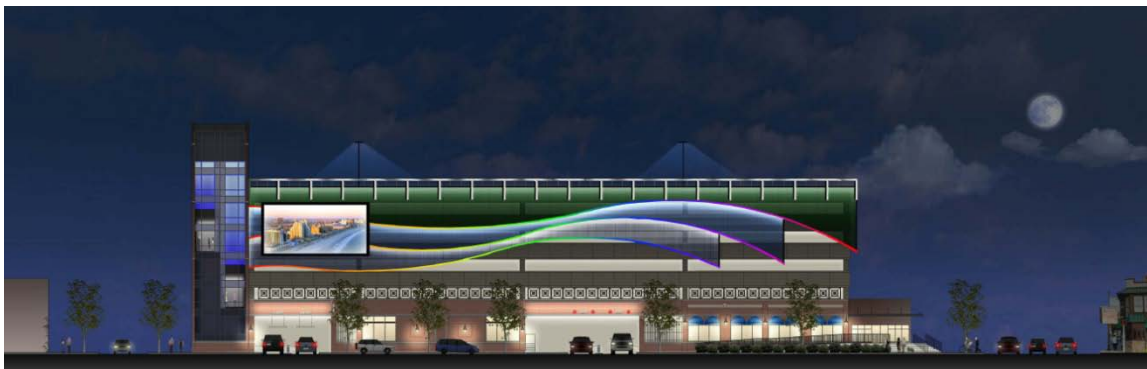
“By creating nearly 1200 parking spots in this key corridor location, CRDA is a catalyst in integrating and supporting Atlantic City’s convention, casino, transportation, retail and restaurant activities,” stated Thomas D. Carver, Esq., CRDA Executive Director.

This parking structure is designed to be the first and last impression that visitors experience as they travel to and from Atlantic City through this corridor. It is intend to be a positive experience for those using the facility on a regular or occasional basis. The Authority has considered the individual and collective parking needs of the Corridor, the community and the various users to create a functional, aesthetically pleasing and safe parking experience.

*Perspective from Atlantic City Expressway:*



*Perspective from Fairmount Avenue:*



Graphic Credit to: Casino Reinvestment Development Authority (CRDA) and Timothy Haahs and Associates Architects

### **About the Casino Reinvestment Development Authority (CRDA)**

The only agency of its kind nationwide – the CRDA has used Atlantic City casino reinvestments as a catalyst for meaningful, positive improvement in the lives of New Jersey residents statewide. In doing so, the CRDA has dramatically changed Atlantic City’s residential, commercial, cultural, and social landscape, while financially supporting quality-of-life improvement efforts throughout New Jersey. In the 24 years of its existence, the CRDA has invested over \$1.8 billion in 400 projects statewide.

###