

PROPOSED LIGHTING PLAN

SCALE: 1/8" = 1'-0"

1
E-1

FIXTURE #	MANUFACTURER & CATALOG #	SYSTEM TYPE		LAMP	MOUNTING			INPUT WATTS	DESCRIPTION	
		INCAN.	FLOUOR.		H.I.D.	NO.	WATTS			SURF.
A	WF HARRIS LIGHTING FIXTURE - 101-W HOOD - 440-BK				PAR 38			1	90	INCANDESCENT FLOODLIGHT SERIES - RATED TO 150W w/ SWAP ON HOOD & WIRING BOX. MOUNTED TO WEATHERPROOF BOX ATTACHED TO AWNING FRAME

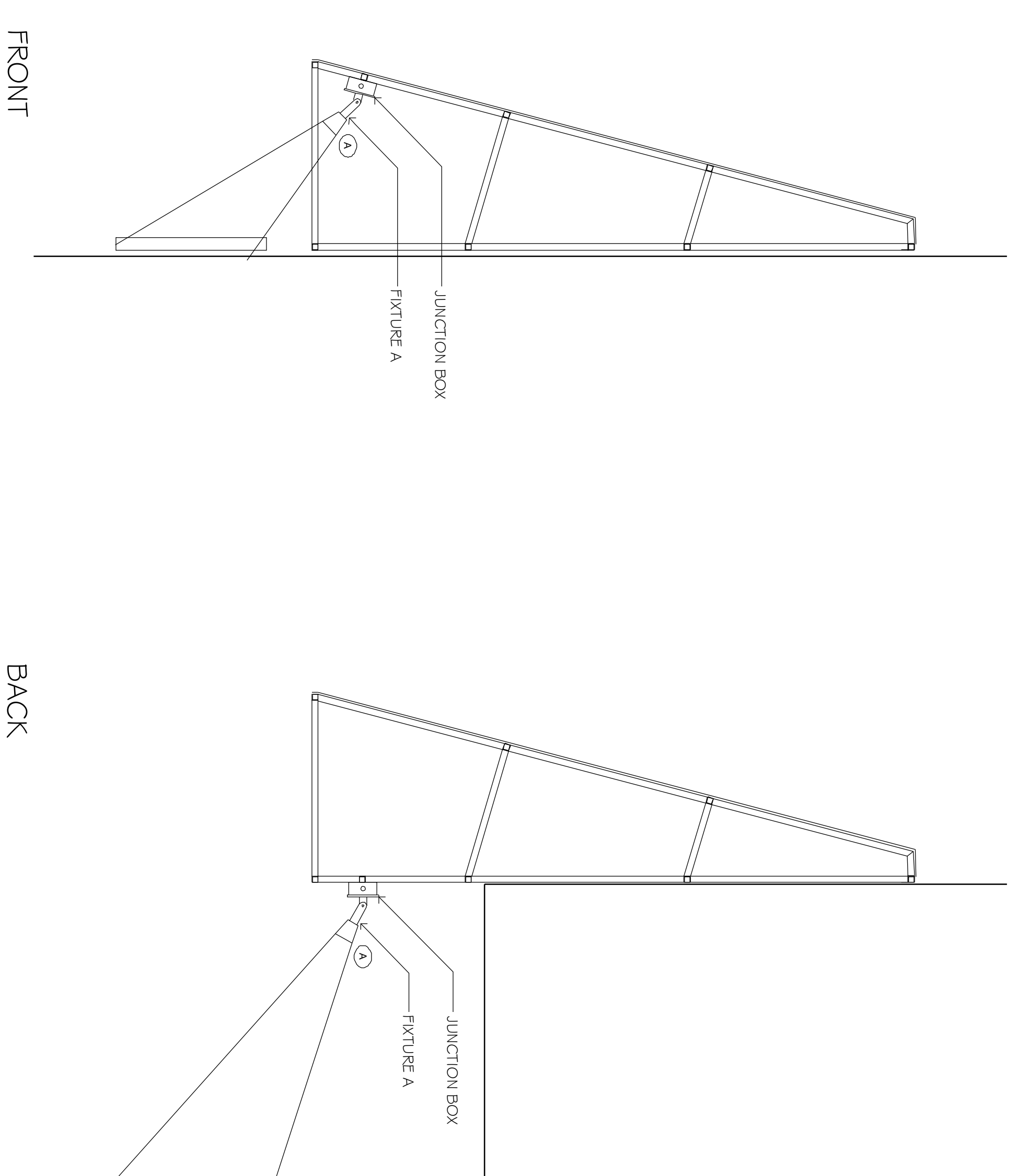
CONTRACTOR SHALL REMOVE EXISTING EXTERIOR LIGHTS & WIRING. PROVIDE NEW LIGHT FIXTURES AS PER DRAWINGS. ELECTRICAL CONTRACTOR SHALL MEG THE EXISTING CIRCUITS TO VERIFY ADEQUATE CAPACITY FOR NEW LIGHT FIXTURES.

ELECTRICAL NOTES

1. ALL ELECTRICAL WORK SHALL BE PERFORMED BY A LICENSED ELECTRICIAN IN STRICT COMPLIANCE WITH THE NATIONAL ELECTRICAL CODE, STATE LAWS, LOCAL CODES AND ALL OTHER REGULATIONS GOVERNING WORK OF THIS NATURE.
2. THE CONTRACTOR IS RESPONSIBLE FOR ALL MATERIAL AND LABOR TO SATISFY A COMPLETE AND WORKING SYSTEM WHETHER SPECIFIED OR IMPLIED.
3. THE CONTRACTOR SHALL SECURE ALL PERMITS OR APPLICATIONS AND PAY ANY AND ALL FEES AS REQUIRED.
4. CONTRACTOR SHALL REVIEW AND BECOME FAMILIAR WITH ALL DWGS. AND SPECIFICATIONS IN THE BID DOCUMENTS AND WORK PERFORMED BY OTHERS. FAILURE TO DO SO SHALL NOT RELIEVE THE CONTRACTOR FROM PROVIDING COMPLETE AND OPERATIONAL SYSTEMS IN ACCORDANCE WITH PERFORMANCE REQUIREMENTS.
5. CONTRACTOR SHALL VERIFY CAPACITY OF EXISTING SERVICE AND DISTRIBUTION SYSTEM, ADJUST AS REQUIRED TO PROVIDE CAPACITY FOR NEW WORK.
6. CONTRACTOR TO MAKE ALL ELECTRICAL CONNECTIONS TO EQUIPMENT SUPPLIED BY OTHERS.
7. UNLESS OTHERWISE NOTED NO WIRE SHALL BE SMALLER THAN #12 AWG. EXCEPT CONTROL AND SIGNAL CIRCUITS MAY BE RUN WITH #14 AWG. NO CONDUIT SHALL BE SMALLER THAN 3/4" ELECTRICAL TRADE SIZE.
8. HOME RUN CIRCUITS MORE THAN 75 FEET FROM THE PANEL BOARD SHALL BE MADE WITH #10 AWG. OR LARGER AS REQUIRED TO LIMIT VOLTAGE DROP TO 2% MAXIMUM.
9. ALL CONDUCTORS SHALL BE THIN COPPER W/90C INSULATION OR GREATER.
10. DO NOT SCALE THIS DRAWING FOR EXACT DIMENSIONS. VERIFY ALL FIGURES, CONDITIONS, DIMENSIONS, ETC. AT THE JOB SITE.
11. ALL LIGHTING CIRCUITS TO BE 120 VOLTS.
12. CONTRACTOR TO CONFIRM EXACT LOCATION OF METERS WITH ELECTRIC UTILITY.
13. CONTRACTOR TO PROVIDE AND INSTALL ALL WORKING THROUGHS, METER SOCKETS, HUBS, AND CONNECTORS IN ACCORDANCE WITH ELECTRIC UTILITY REQUIREMENTS.
14. UTILITY TO INSTALL PRIMARY SERVICE, AND MOUNT TRANSFORMER AND SERVICE CABLES AND CONDUITS AS REQUIRED TO METER LOCATIONS.
15. WIRING METHOD SHALL BE TYPE MC.
16. CONDUIT SHALL BE PVC OR GALVANIZED METAL.
17. FIXTURES SHALL BEAR THE UL LABEL FOR WET LOCATIONS.
18. LABEL ALL NEW CIRCUITRY IN THE PANEL BOX.

ELECTRICAL SYMBOLS

	CHANDELIERY/HANGING FIXTURE
	CEILING SURFACE MOUNT
	WALL MOUNTED LIGHT FIXTURE
	RECESSED LIGHT FIXTURE
	RECESSED ADJUSTABLE LIGHT FIXTURE
	RECESSED LIGHT FIXTURE - WET LOCATION
	FLUORESCENT FIXTURE
	TRACK LIGHTING WITH HEAD
	CONTINUOUS STRIP LIGHTING
	CEILING FAN WITH LIGHT (OPTIONAL)
	EXHAUST FAN
	110 VOLT DUPLEX RECEPTACLE @ 18" A.F.F.
	110 VOLT DUPLEX RECEPTACLE @ 42" A.F.F.
	110 VOLT DUPLEX RECEPTACLE - GFI
	110 VOLT DUPLEX RECEPTACLE - SPLIT WIRE
	110 VOLT DUPLEX RECEPTACLE - FLOOR MOUNTED
	220 VOLT DUPLEX RECEPTACLE @ 18" A.F.F.
	JUNCTION BOX
	JUNCTION BOX - WEATHERPROOF
	DISCONNECT
	SWITCH
	SWITCH WITH DIMMER
	SINGLE SWITCH w/FAN AND LIGHT CONTROLS
	SINGLE SWITCH MOISTURE RESISTANT
	CABLE OUTLET
	TELEPHONE
	SMOKE DETECTOR
	HEAT DETECTOR
	EXIT SIGN SYMBOL
	EMERGENCY LIGHTING
	EMERGENCY LIGHTING WITH EXIT SIGN
	CEILING DIFFUSER
	RETURN REGISTER OR EXHAUST GRILLE



FIXTURE POSITIONS

SCALE: 3/4" = 1'-0"

2
E-1

PROPOSED OCEAN CLUB BOARDWALK FACADE
3100 BOARDWALK
ATLANTIC CITY NEW JERSRY 08401

Signature
Date
Registration #
AI 09640

Craig F. Dothé Architect LLC.
ARCHITECTS & PLANNERS
33 N. Brighton Ave. (609) 348-2236
Atlantic City, NJ 08401 Fax (609) 348-0118

Consultant

#	Revisions	Date

Scale:
AS NOTED

Project No.:
2010

Drawn by:
sb

Date:
FEBRUARY 26, 2011

E-1